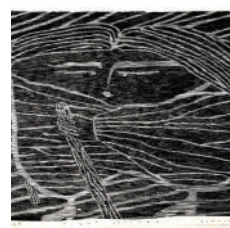
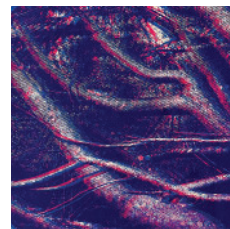
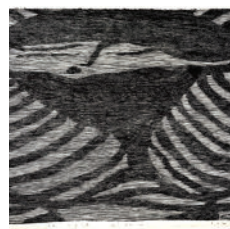
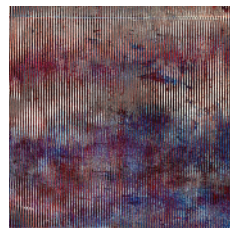


OFFICIAL OPENING 13 December 2024 5.30pm

THE HENRY JONES ART HOTEL
25 HUNTER ST HOBART | 03 6210 7700
art@thehenryjones.com | thehenryjones.com



The COLLECT Art Purchase Scheme is an interest-free loan scheme that enables Australian residents to purchase artworks by contemporary Tasmanian artists from The Henry Jones Art Hotel, Hobart, Tasmania.



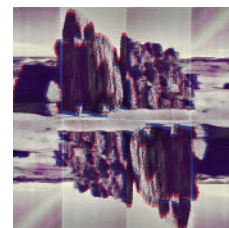
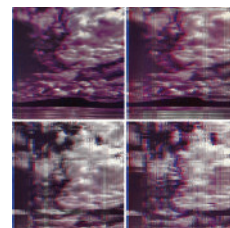
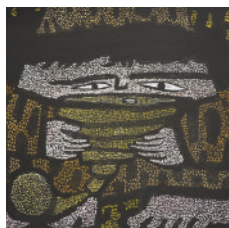
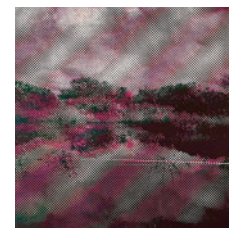
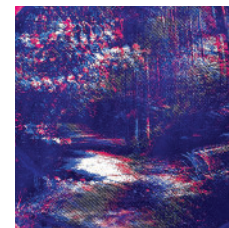
THE HENRY JONES ART HOTEL PRESENTS

SHIFTING GROUND

AN EXHIBITION BY
LUIA ROMEO
AND
MICHAEL SCHLITZ

Both landscape and the figure feature in the works of these two printmakers. From the Stereoscopic visions seen through a singular but skewed lens of Romeo's spherical imagery to the curiously whimsical scenarios of Schlitz's figures where the landscape, symbols and figure are intrinsically connected in varying states of implied narrative. 'Shifting ground' is an amalgamation of purpose and vision.

13 December 2024 – 31 January 2025



Michael Schlitz

Represented by Bett Gallery Hobart

I have studied traditional Japanese MokuHanga in Awagishima Japan and use a combination of Eastern and Western techniques in the construction of large-scale woodcuts printed by hand. The imagery is primarily based on the figure in the landscape reflecting experiences derived from the environment. My work grew out of early depictions of “new environments” created by first European contact with the people and landscapes in Australia, although it is now primarily autobiographical in nature. My work is held in public and private collections both nationally and internationally.

1. fish and the maiden, 2024

woodcut on lokta paper
55 x 73 cm
edition of 10 plus 2 artist proof
\$1,500 unframed

2. angry manchild, 2024

woodcut on lokta paper
55 x 73 cm
edition of 10 plus 2 artist proof
\$1,500 unframed

3. the man in the fish, 2024

woodcut on kosuke paper
96.5 x 63 cm
edition of 10 plus 2 artist proof
\$1,1750 unframed

4. the floor in the wind, 2024

woodcut on lokta paper
55 x 73 cm
edition of 10 plus 2 artist proof
\$1,500 unframed

5. night journey, 2024

woodcut on lokta paper
55 x 73 cm
edition of 10 plus 2 artist proof
\$1,500 unframed

6. camino, 2024

woodcut on lokta paper
55 x 73 cm
edition of 10 plus 2 artist proof
\$1,500 unframed

7. heart for lungs, 2024

woodcut on lokta paper
55 x 73 cm
edition of 10 plus 2 artist proof
\$1,500 unframed

8. pressing, 2024

woodcut on lokta paper
55 x 73 cm
edition of 10 plus 2 artist proof
\$1,500 unframed

9. holding, 2024

woodcut on lokta paper
55 x 73 cm
edition of 10 plus 2 artist proof
\$1,500 unframed

10. hard with heart, 2024

woodcut on lokta paper
55 x 73 cm
edition of 10 plus 2 artist proof
\$1,500 unframed

11. openmouthed boy, 2024

woodcut on lokta paper
55 x 73 cm
edition of 10 plus 2 artist proof
\$1,500 unframed

12. cold within, 2024

woodcut on lokta paper
55 x 73 cm
edition of 10 plus 2 artist proof
\$1,500 unframed

13. warmhands, 2005-2024

End of edition woodblock
Painted wood
\$5000 framed

14. boy on twine, 2005-2024

End of edition woodblock
Painted wood
\$5000 framed

15. postmasters return, 2005-2024

End of edition woodblock
Painted wood
\$5000 framed

16. the bees, 2005-2024

End of edition woodblock
Painted wood
\$5000 framed

17. trumpets, 2005-2024

End of edition woodblock
Painted wood
\$5000 framed

18. the providers, 2005-2024

End of edition woodblock
Painted wood
\$8000 framed

Luisa Romeo

My current and ongoing body of work is based on the exploration of the internal and external landscape. My relationship to the external world, processing the thousands of images that I take in every day and trying to make sense of it all. The Multi-layered image using the fundamentals of CMYK and the misregistration of the layers holds a great interest for me as it creates a vibration and vibrancy in the works. These anaglyph images morph, warp and create a stereoscopic vision. As if with eyes partly closed you are looking at the inner essence of space and bringing to life a new vision.

19. Duck Hole Lake, 2024

Screenprint on paper
57cm x 57cm
Image Size 50cm diameter
7 prints available in the edition
\$200 each

20. Pandani Grove, 2024

Screenprint on paper
57cm x 57cm
Image Size 50cm diameter
7 prints available in the edition
\$200 each

21. Pipeline track Jaunt, 2024

Screenprint on paper
57cm x 57cm
Image Size 50cm diameter
7 prints available in the edition
\$200 each

22. The trees have eyes, 2024

Screenprint on paper
57cm x 57cm
Image Size 50cm diameter
7 prints available in the edition
\$200 each

23. Reflective Sanity, 2024

Screenprint on paper
57cm x 57cm
Image Size 50cm diameter
9 prints available in the edition
\$200 each

24. Perimenopausal skies, 2024

Screenprint on paper
100cm x 120cm 4 panels
Image Size 50cm diameter
\$1600

Artists Statement:

The wild fluctuations of states, both mental and physical can be jarring. An unsettling and unexplainable confusion sets in at any given moment and can linger. Concentration becomes a challenging concept. Memory fades in and out and at times dissipates completely. Existential dread buries deep in scattered and anxious thoughts. Sleep comes in bursts. The body is changing.

25. An Infinite field of creative potential, 2024

Screenprint
140cm x 160cm,
\$2600

Artists Statement:

An infinite fertile field of creative potential is a direct response to the swell of sound resonating through studio walls from the adjacent rehearsal space. A hypnotic, flowing, expressive sound emanated. Just as cleansing as being submerged momentarily in a winters ocean. The introduction of amplification through an extensive pick up system allows for a biting clarity to the Vibraphone. The lower end now has the ability to speak. Bounding across art forms are the satisfyingly relaxed clarity of vibrating lines. In the words of the played vessel, A door was opened, I walked out of a large restricted room into an infinite fertile field of creative potential.

26. Fishing for Galashings, A visual love letter, 2024

Screenprint on paper
165cm x 277cm, 18 panels,
Edition of 2
\$7700

Artists Statement:

Fishing for galashings, a visual love letter An island in an expanse.

An amalgamation of creative souls, resting against each other, solidifying with mutual respect and adoration.

The textured complexities, weathered by experience. Intricate, durable, formidable. An erupting and unsettling sky threatens to rain conflict. Threatening after a time of pent up past unresolved hurt. The clearing firmament. With resolution, they remain steadfast.

27. Fragmentation, 2024

Two tone Collagraph
100cm diameter
\$1200

28. Fragmented Landscape, 2024

Two tone Collagraph
100cm diameter
\$1200

29. Circle work I, 2024

Two tone Collagraph,
100cm diameter,
\$1200

30. Circle Work II, 2024

Two tone Collagraph with gold leaf,
90cm diameter
\$1200